

AQUARISE III

SPECIFICATIONS

GENERAL

Description	Jack Up Platform
Year built	2019
Classification	RINA
IMO number	9845908
Operator UAE	Aqua Diving Services
Hull constructed by	Damen Al Bwardy
Flag	Panama (Seafrost Marine Inc)
Gross Tonnage	1967 T
Net Tonnage	590 T
Deadweight	230.49T
Class Notation	Supply vessel-assisted propulsion Special service – self elevating platform

DIMENSIONS

Length Overall	38.04 m (Hull 34.5 m)
Beam overall	30.0 m (incl 4 m lay down area)
Depth	4.0 m
Clear deck area	650 sqm (450 plus 200 light)
Draft (fully laden)	2.35 m

CAPACITIES

Fuel	75.0 m ³
Fresh water	280.0 m ³
Sewage	60.0 m ³
Max cargo capacity	364 T

JACKING SYSTEM

Legs	4x
Diameter	1.63 m (64")
Length	60.0 m (197 ft)
Spud can area	14.2 m ²
Useable leg length	57 m below hull

PROPULSION

Speed	Max 7 knots (5 knots eco)
Main engine	2x 850HP Caterpillar C18 ACERT
Bow thruster	215 HP electric drive
Fuel cons (2 engines)	310 L/HR (steaming)
Fuel cons (1 gen)	88 L/HR (standby)

ELECTRICAL SYSTEM

Network	24 V / 280 V / 415 V
Main generator set	3 x 425 kW (Caterpillar)
Emergency generator set	1 x 175 kW (Caterpillar)

DECK LAYOUT

1 x Aft Deck Centre	Fixed boom SWL 45 TON
1 x Stbd Midship Crane	Fixed boom SWL 70 TON

LIFE SAVING EQUIPMENT

Life Boat	2 x 75 pax (Davit launch)
Life rafts	8 x 25 pax units 2 x 35 pax units

SUPERSTRUCTURE

Accommodation	128 pax (ext. to 200 pax)
1 man cabin	2x
2 man cabins	11x
4 man cabins	26x
Hospital (MDK)	1x
Offices	4x
Gym	1x
Recreation room	1x
Mess x 2 (seniors/juniors)	84 pax per sitting
Galley	1x
Change Room	1x
Laundry Room	6x washers 6x dryers

CREW

Standard crew (24hr Opr)	34 (15 crew + 19 catering)
--------------------------	----------------------------

Barge Variable Load	298 MT
Maximum Air Gap	39 m
Max. Operating Water	40 m w/ 4 m air gap no penetration
Leg Bearing Pressure	37 MT/sqm



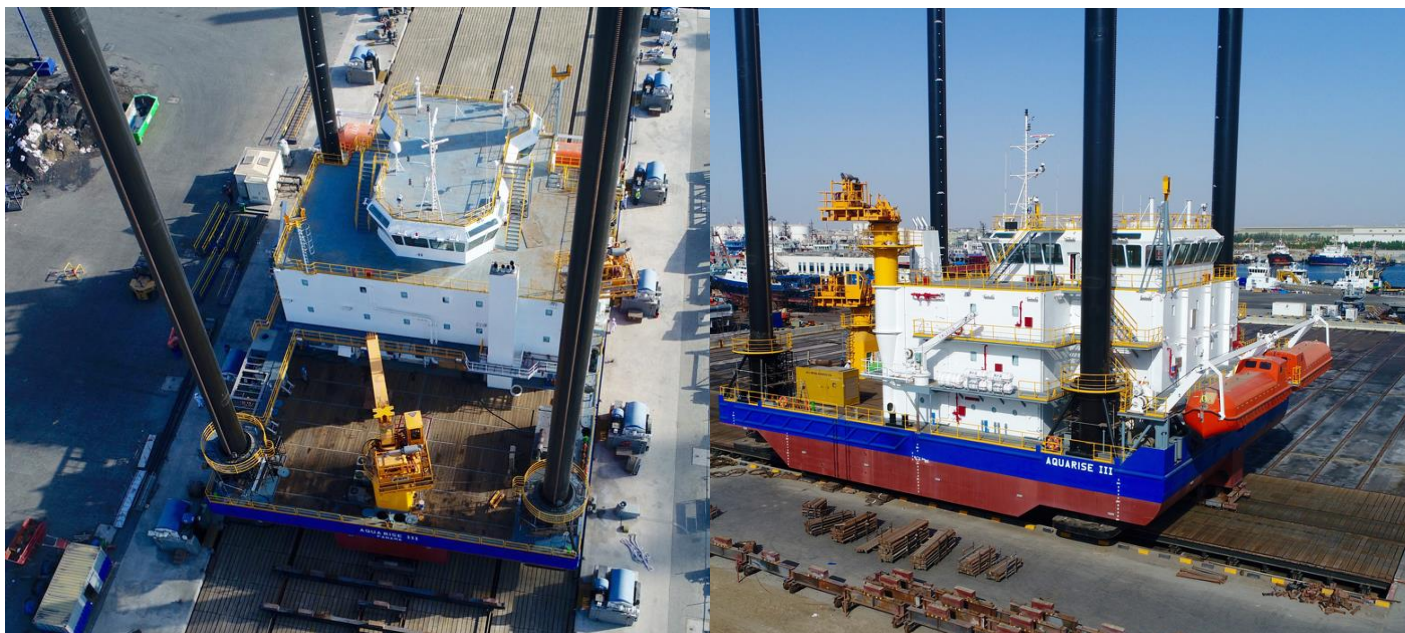
PO Box 282678, Dubai, UAE

info@aquadivingme.com

+971 4 323 3100

+971 52 941 7777

www.aqua-diving-services.com



AQUARISE III

SPECIFICATIONS

NAUTICAL & COMMUNICATION EQUIPMENT*

Navigation lights	All necessary are installed
Radar X Band	2x JRC / JMA-5312-6BB
ECDIS	1x Navmaster / 800MKII
AIS	1x Koden / KAT-100
SVDR	1x Danelec / DM – 100
BNWAS	1x AMI / BN150
DGPS	2x JRC / JLR - 7900
Gyrocompass	1x Yokogawa / CMZ – 900B
Magnetic Compass	1x Lilley & Gilley / MK2002
Echo sounder	1x JMC / F3000W
Doppler log	1x JRC / JLN-652BB
Anemometer	1x Lilley & Gilley / 2030 MK2
Autopilot	1x Navitron NT888G
Electrical horn	1x IBUKI / ES300
GMDSS-MF/HF	1x Sailor 6000
GMDSS-VHF/DSC	2x Sailor 6222
GMDSS-Handheld	3x Entel / HT 649
GMDSS-EPIRB	1x McMurdo / E5
GMDSS-SART	2x McMurdo / S4
GMDSS-Navtex	1x JRC / NCR – 333
SSAS & LRIT	1x Sailor / 6120
PAGA	1x Zenitel / SPA
Telephone Integrated	1x Zenitel / ACM
SPT	1x Zenitel / VSP
TVRO	1x SeaTel / ST24
AM/FM/TV	1x Sailor / Mark30ALC
Crane Radios	2x ICOM / IC-2820H
UHF Portable Radios	6x Entel / HT783

OTHER EQUIPMENT

Water Maker	Reverse Osmosis Desalination Make: Quantum Model: QTMRO 40T-SW Flow Rate: Max. 40cbm/d
Oily Water Separator	Ocean Clean 0.25 EB Capacity: 0.25 cbm/h IMO Compliant
Sewage Treatment Plant	Make: Wartsila Model: ST06-13 with 2 pumps 2 compressors Approved to MEPC 227(64)